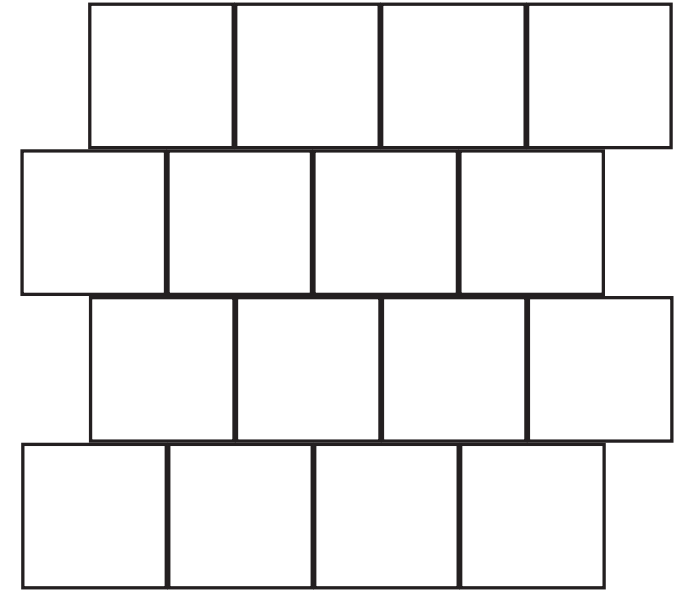


How Pattern Works

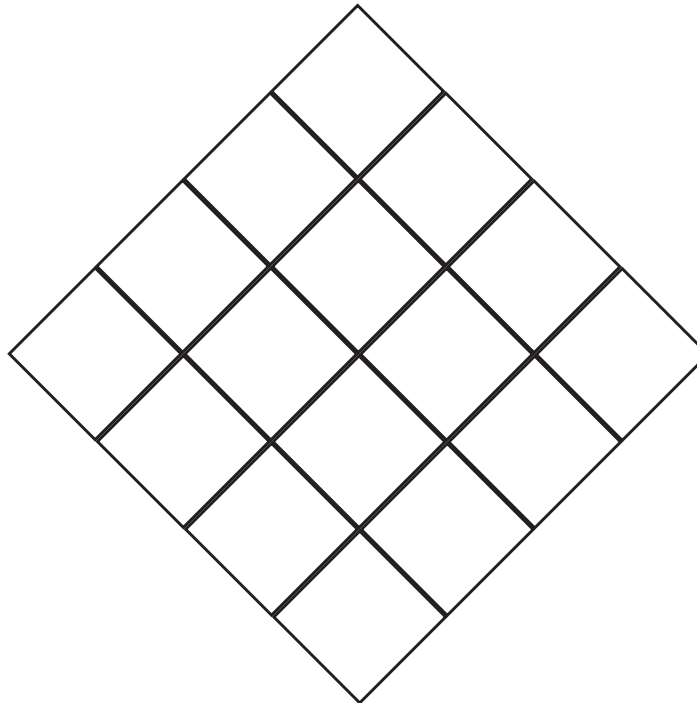
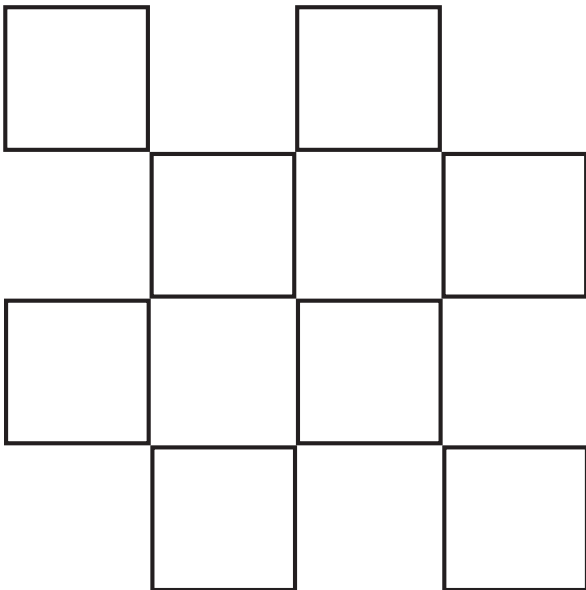
Layouts



Pattern layouts
& challenges



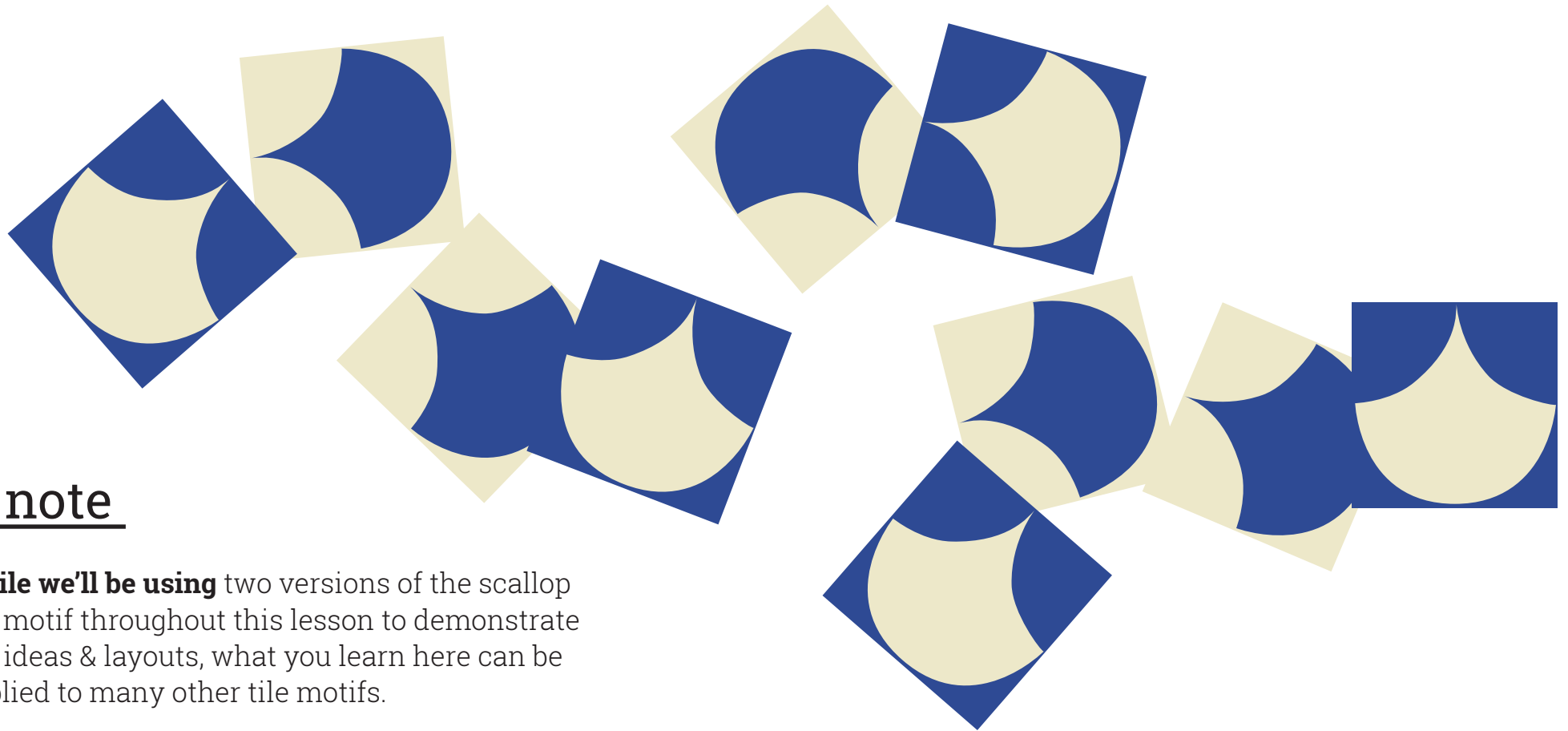
by Heather Moore of
Skinny laMinx



It's astonishing how many patterns can be made, using tile motifs from the walls & subways of Lisbon.

The following pages will show you how flipping & twisting a tile can generate seemingly endless patterns.





A note

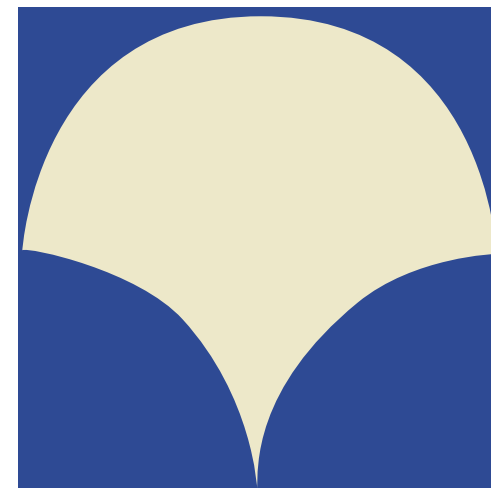
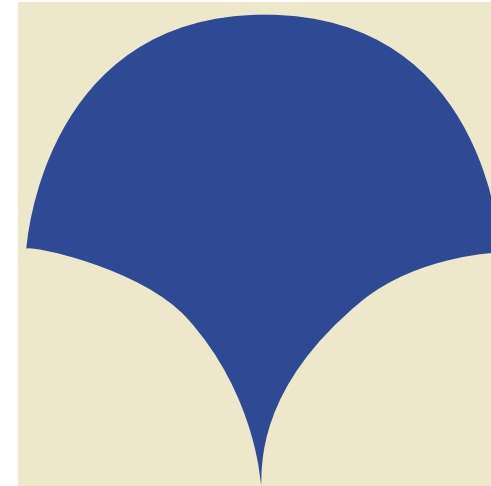
While we'll be using two versions of the scallop tile motif throughout this lesson to demonstrate the ideas & layouts, what you learn here can be applied to many other tile motifs.

That means when you download the other Lisbon tile cards, you'll be able to apply the same lessons to the new cards too.

Let's get busy

At this point, you should have two sets of 16 Scallop tile cards available to play with.

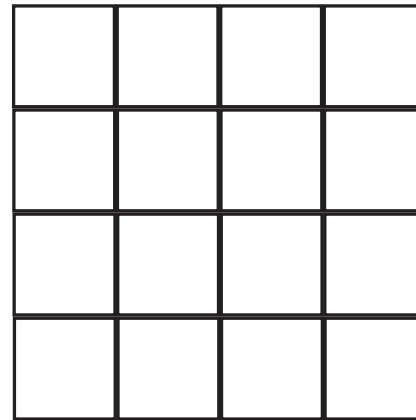
You can print these out using the PDF download, or make them yourself, following the step-by-step video instructions.



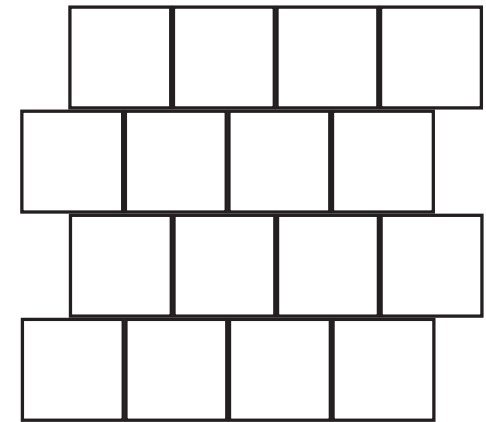
Pattern layouts

The principles behind creating tiled patterns are incredibly simple. It's almost hard to believe that these basic layouts and their variations can lead to almost endless pattern options..

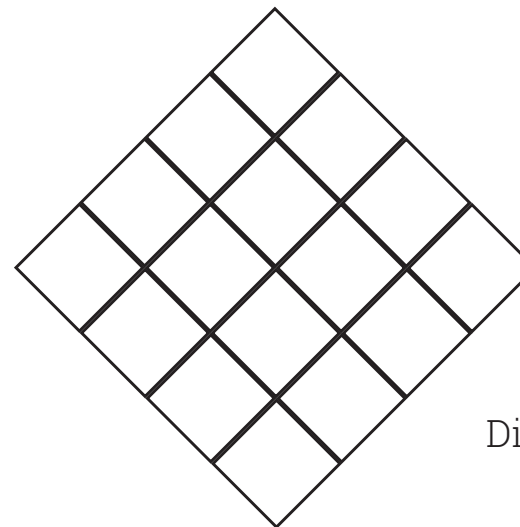
Let's grab our tile cards & start exploring!



Stacked layout



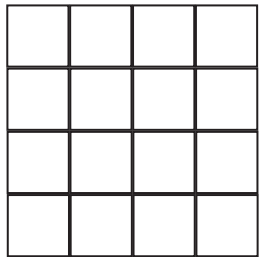
Brick layout



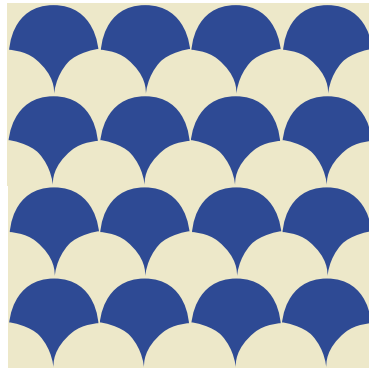
Diagonal layout

Stacked layout

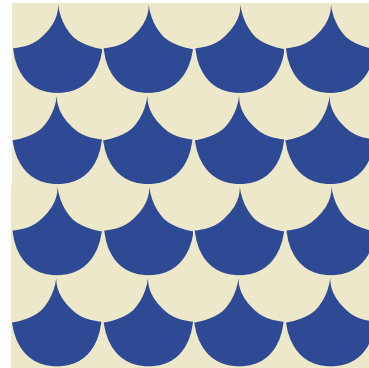
Stack tiles on top of each other, creating variation by changing direction, removing tiles or changing colour.



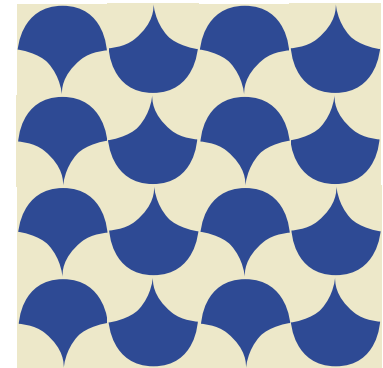
Stacked



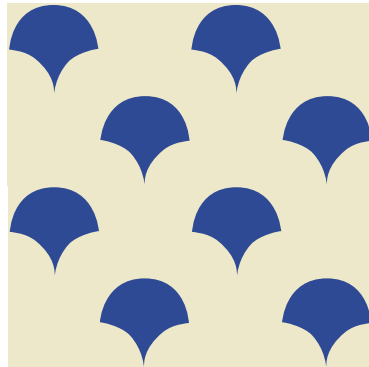
Same direction



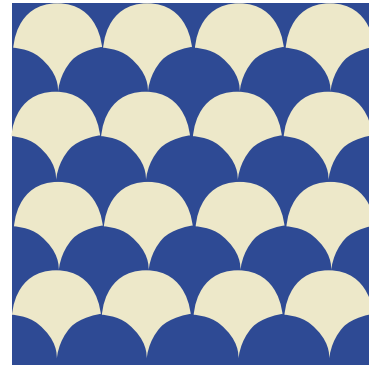
Change motif direction



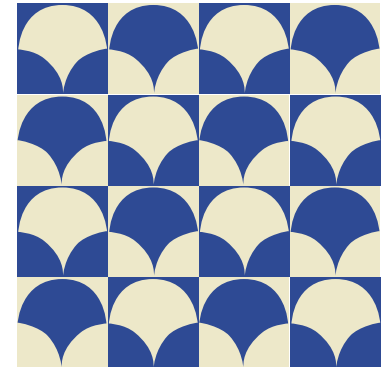
Turn alternate motifs



Remove tiles



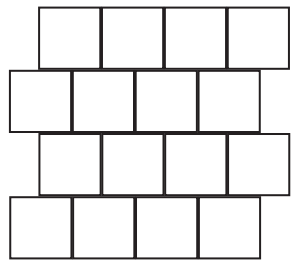
Reverse colours



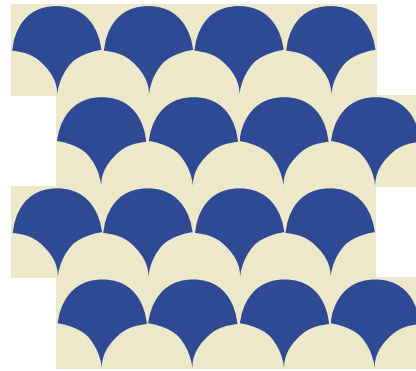
Alternate colours

Brick layout

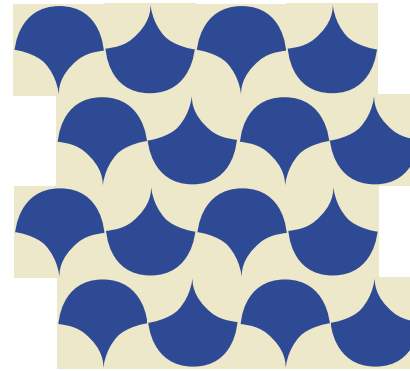
Stack tiles like bricks, shifting every second row by half a tile.



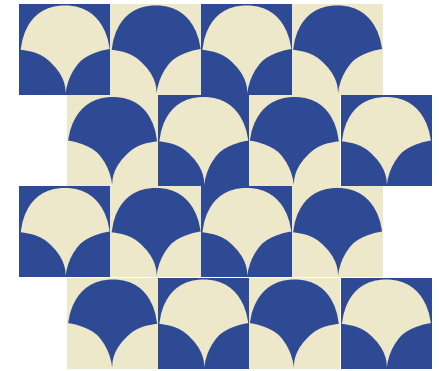
Horizontal brick



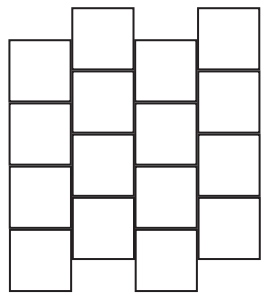
Shift horizontally



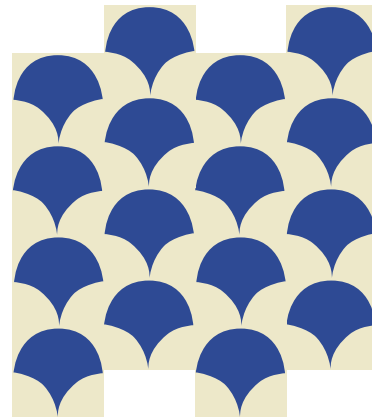
Rotate & shift



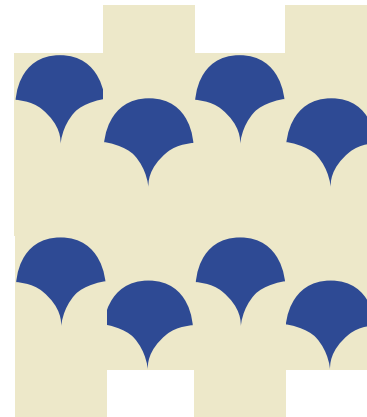
Alternate colours



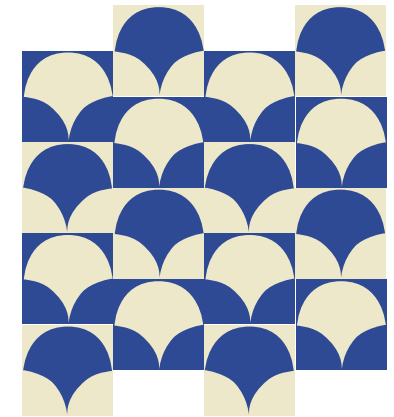
Vertical brick



Shift vertically



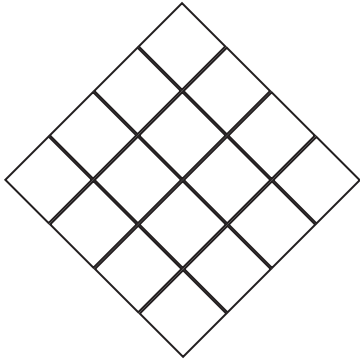
Remove motifs & shift



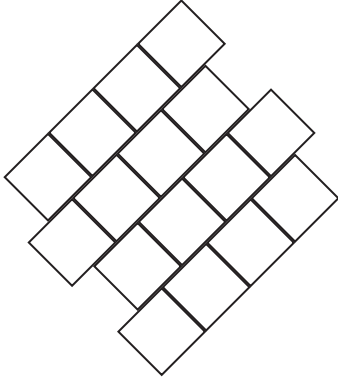
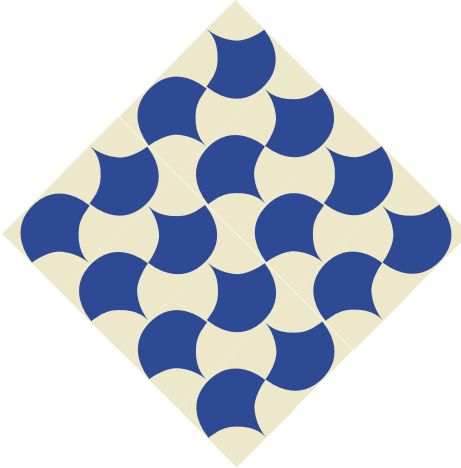
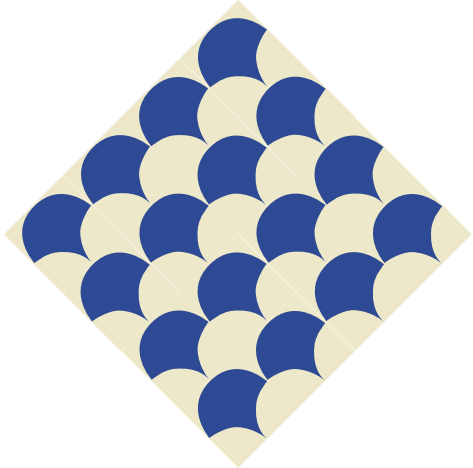
Alternate motifs

Diagonal layout

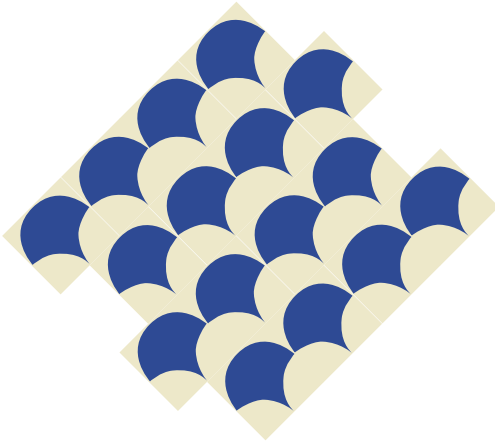
Rotate tiles by 45° to create new pattern opportunities.



Stacked at 45°



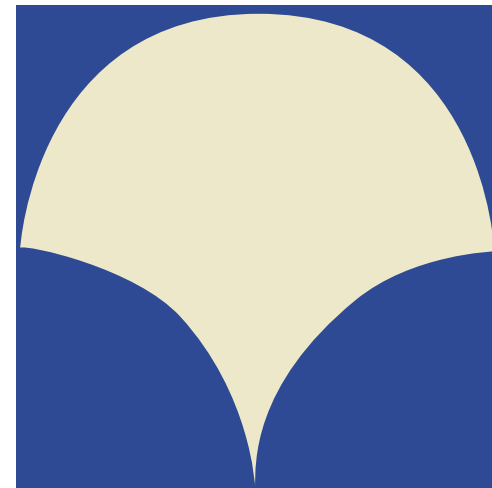
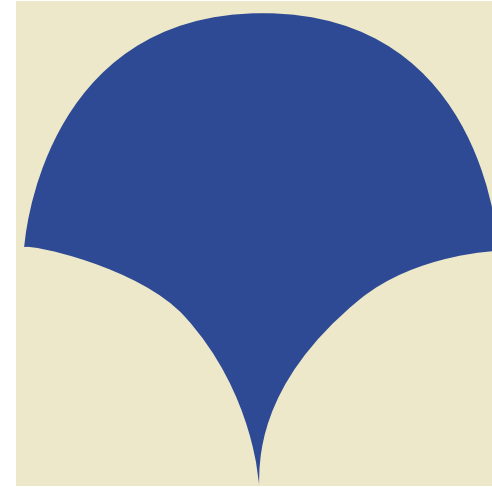
Brick at 45°



Time to play

Follow each of the challenges on the following pages and get flipping, twisting & placing your printed or homemade Lisbon Tiles to come up with so many patterns.

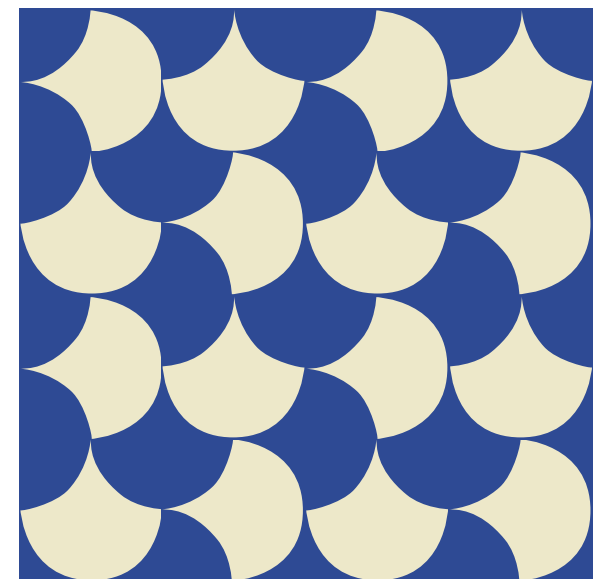
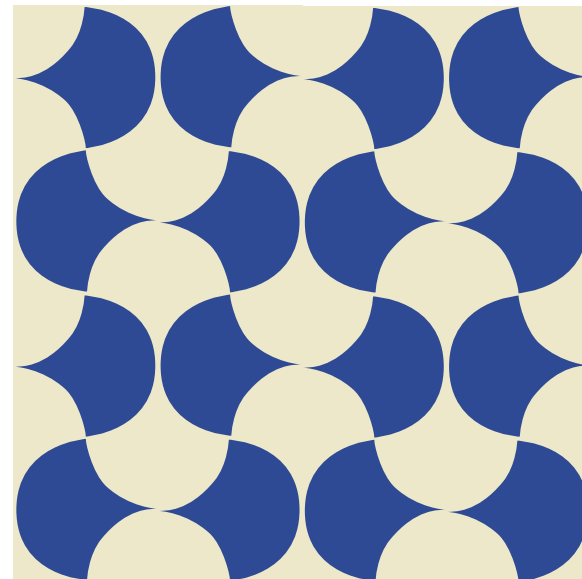
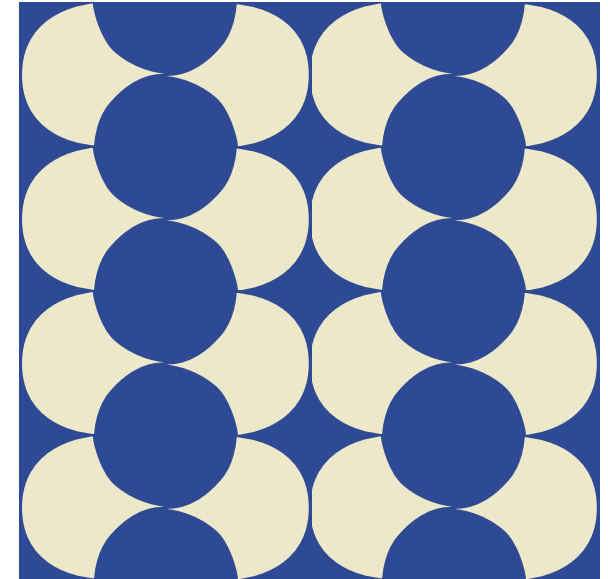
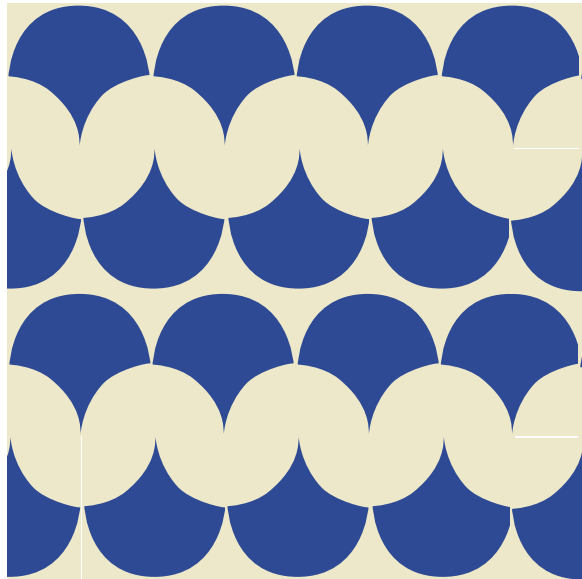
Have fun working through the challenges, & at the end you'll be a tile patternmaking whiz!



Challenge 1

Single tile patterns

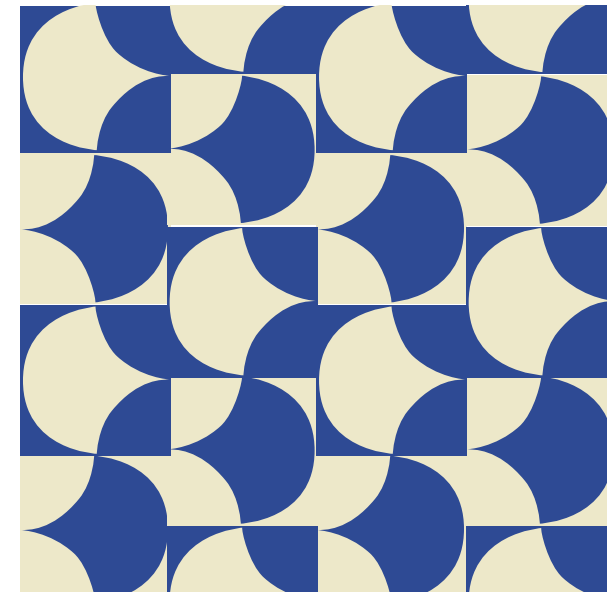
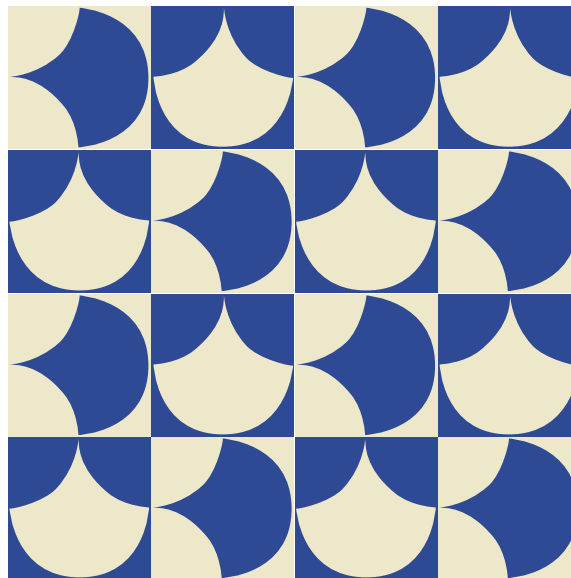
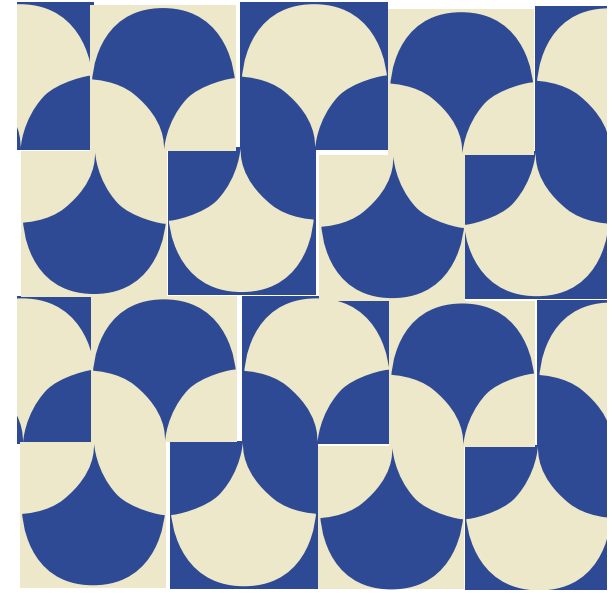
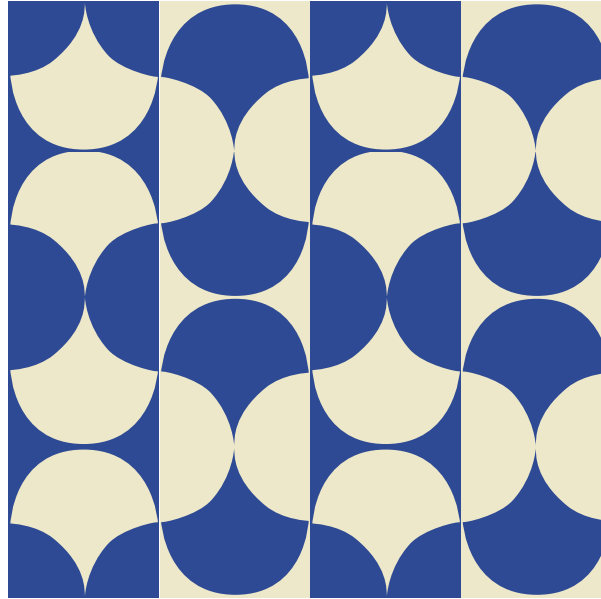
Use your tile sets to figure out how to make all the patterns on this page.



Challenge 2

Two tile patterns

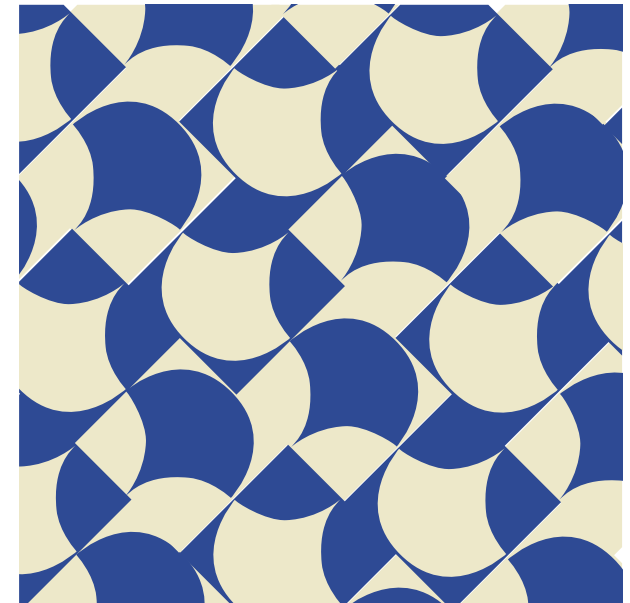
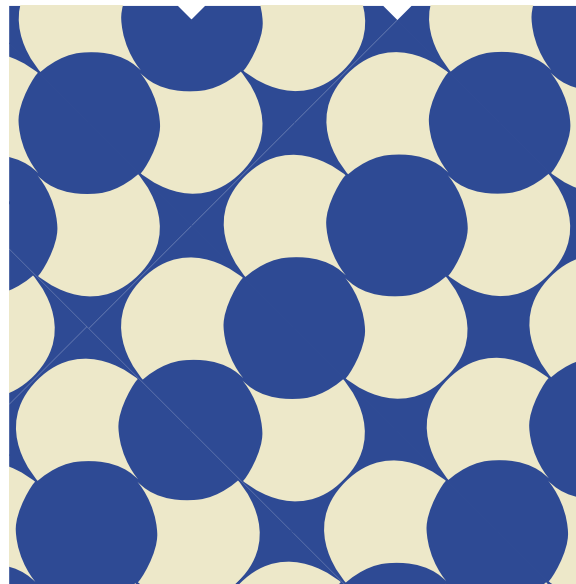
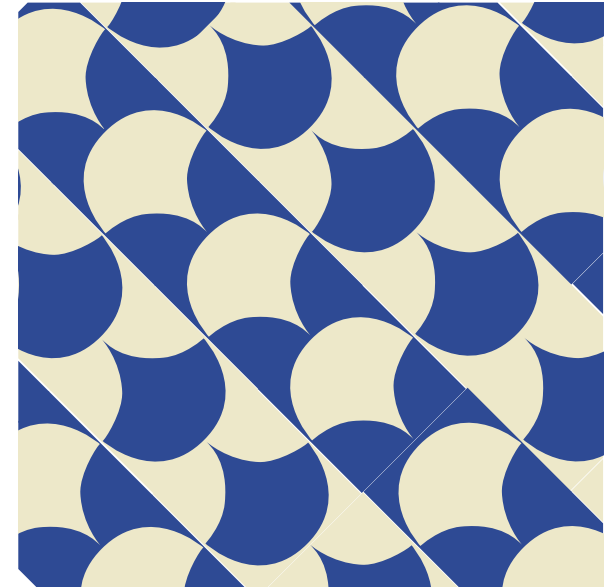
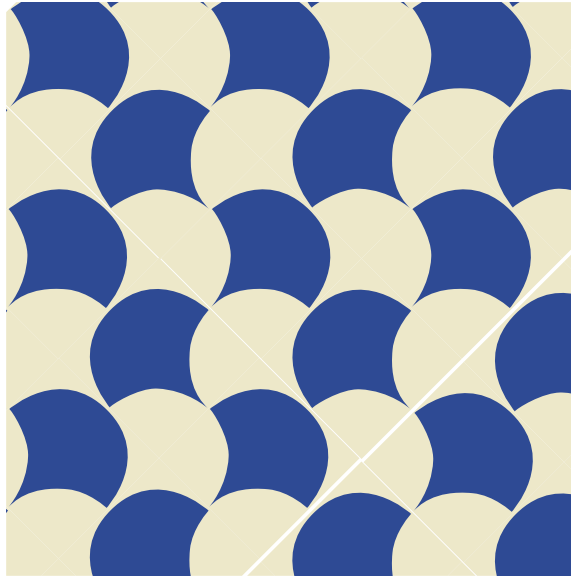
Combine both sets of tiles to figure out how to make all the patterns on this page.



Challenge 3

Diagonals

Use your tiles on the diagonal to figure out how to make all the patterns on this page.





- Seth Godin

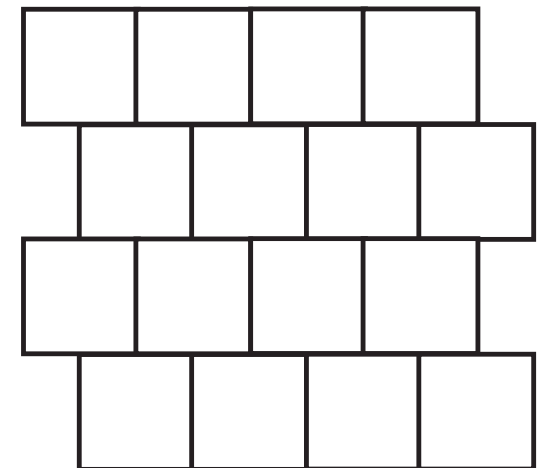
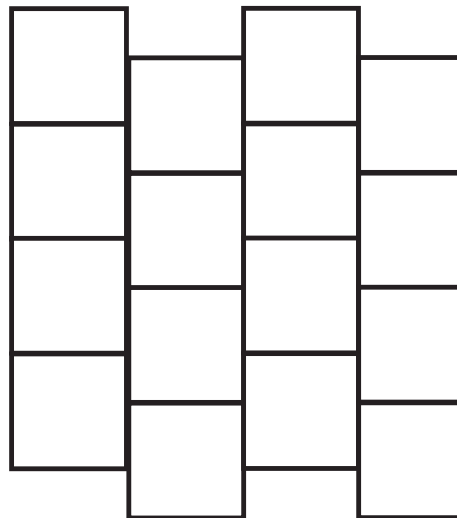
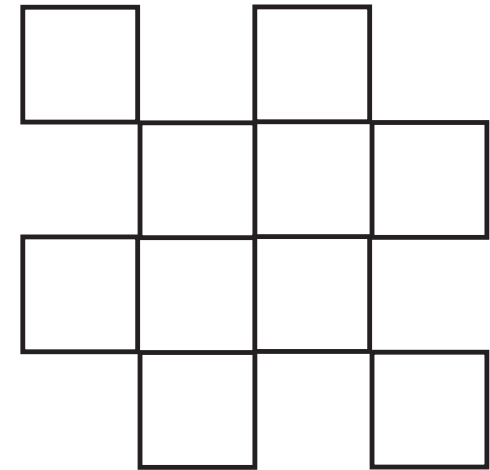
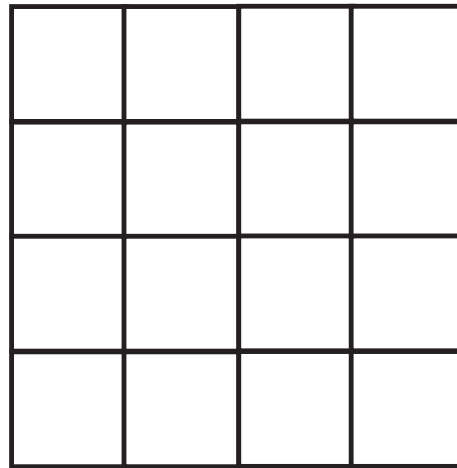
Challenge 4

Endless Pattern

Use each of the tile layouts & challenge yourself to make as many patterns as you can for each one:

- Using one tile version only
- Mixing both tile versions
- Turning tiles 45°

Use your phone to take a photo of each new pattern as you go.



Challenge 5

Pattern snap

Do this with a friend.

- Shuffle both sets of cards together
- Place them face down & divide into two packs
- Turn the top card on each pack at the same time.
If they match design & direction, the first person to shout SNAP! wins all the turned over cards.
- The aim is to win all the cards.

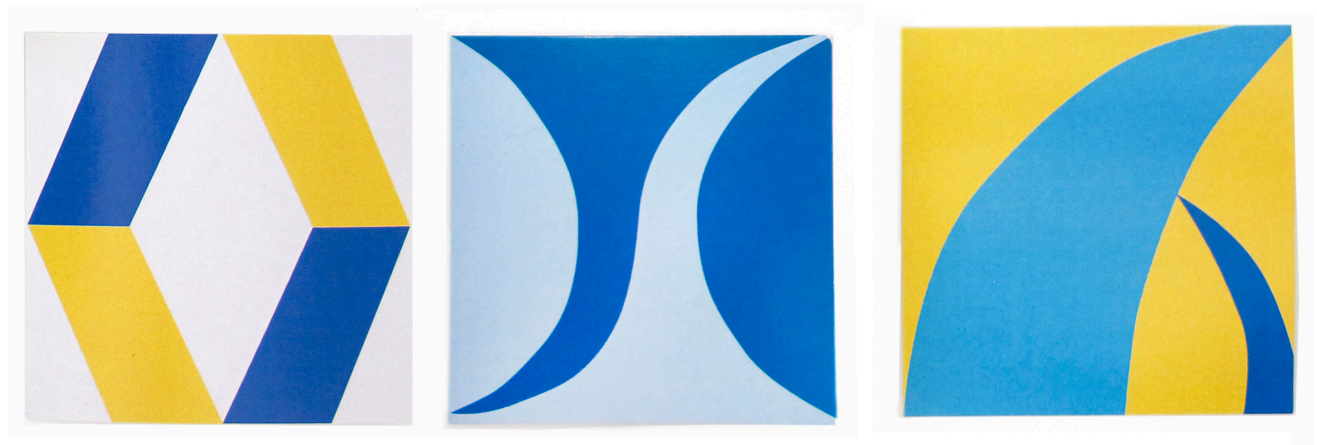
PS: This game works best when you have downloaded all of the Lisbon tile packs in this course.



More options

Had fun? Are you intrigued?

Download the other three printable
Lisbon tiles for more pattern fun.



Overall patterns

The **pattern lessons** outlined here do not apply to all tile designs.

Some tiles, like the one on the wall behind me here, are designed like a puzzle piece, made to fit into a specific larger pattern. That means, if you lay the tile in the wrong direction, the pattern doesn't work.

The last lesson in this course will demonstrate how this kind of pattern works.





Just as a pattern is made from repeated motifs,
so we build our lives from the way we spend
the passing days.

Come on, let's take care with what we say,
what we make & how we live - every single
day - making our life into a beautiful pattern.

Let's start today.
